

Microsoft® Project 2010

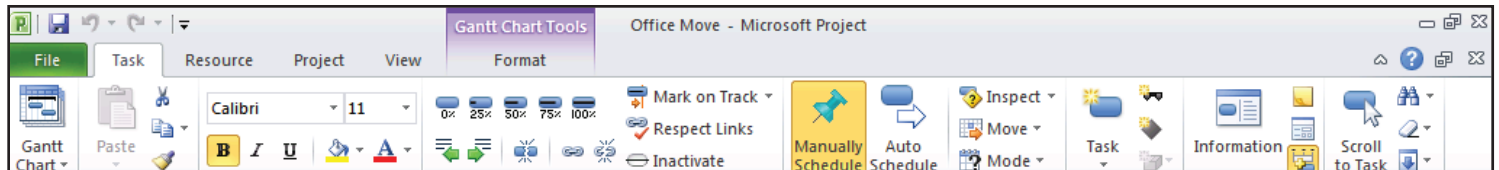
Select the right tools for today and tomorrow.

Microsoft® Project 2010 offers flexibility and choice by providing tailored work management solutions for individuals, teams and the enterprise.

What's New in Project Standard 2010

In Microsoft® Project Standard 2010, user-controlled scheduling puts you in control and brings together the flexibility and ease of a tool like Microsoft® Office Excel 2010 with the power of the Project scheduling engine. And, with a completely new and visually enhanced timeline view, you have an easier, more intuitive way to see and share key dates and deadlines.

Fluent™ User Interface



- Work more efficiently with the simple and intuitive Microsoft® Fluent™ user interface – new graphical menus and a familiar experience provide the tools you need to plan and manage your project.
- Task oriented tabs and contextual menu groupings reveal powerful features, making it easier to get started and realize results.
- Learn about features and rich formatting controls quickly with descriptive tooltips and drop down galleries.
- Simply be more productive by choosing your own menu options, quick access toolbar settings and setting defaults.
- Save to XPS or PDF. Share, print and publish project information with just one click using the new Microsoft® Office Backstage™ view.

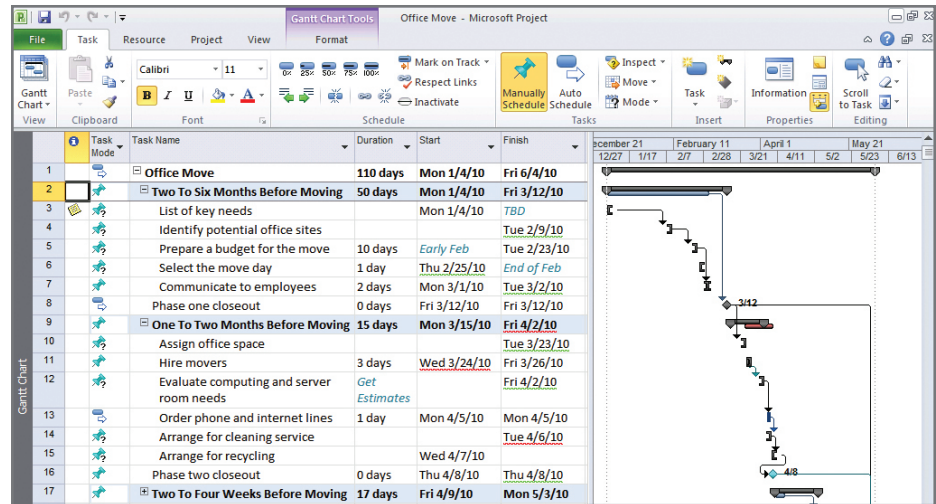
Excel-Like Experience

- Enhanced copy and paste makes it easy to share information effectively with other Microsoft Office applications while retaining formatting.
- Add columns dynamically by entering data without having to first select the data type.
- Simplify data entry with auto-complete which displays a list of previously used values to select from.
- Automatic text wrap eliminates extra formatting steps by adjusting row height to display full task names.
- Quickly mine data and analyze results with easy access filtering for all columns.
- Create emphasis with rich color options and text formatting to express ideas and solve problems in new ways.

Task ID	Task Name	Duration	Start	Finish	Priority	Cost
1	Office Move	79 days	Mon 1/4/10	Thu 4/22/10		
2	Two To Six Months Before Moving Day	38 days	Mon 1/4/10	Wed 2/24/10		\$1000
3	Make list of key needs that must be met by new office space	7 days	Mon 1/4/10	Tue 1/12/10	High	
4	Identify potential office sites	20 days	Wed 1/13/10	Tue 2/9/10	Medium	
5	Prepare a budget for the move	10 days	Wed 2/10/10	Tue 2/23/10	High	
6	Select the move day	1 day	Wed 2/24/10	Wed 2/24/10	High	
7	Communicate to employees	1 day	Wed 2/24/10	Wed 2/24/10	Medium	
8	Phase one closeout	0 days	Wed 2/24/10	Wed 2/24/10		
9	One To Two Months Before Moving Day	13 days	Thu 2/25/10	Mon 3/15/10		
10	Assign office space	5 days	Thu 2/25/10	Fri 3/5/10	Low	
11	Hire movers	1 day	Mon 3/8/10	Mon 3/8/10	Medium	
12	Evaluate computing and server room needs	2 days	Tue 3/9/10	Wed 3/10/10		
13	Order phone and internet lines	1 day	Thu 3/11/10	Thu 3/11/10		
14	Arrange for cleaning service	1 day	Fri 3/12/10	Fri 3/12/10		

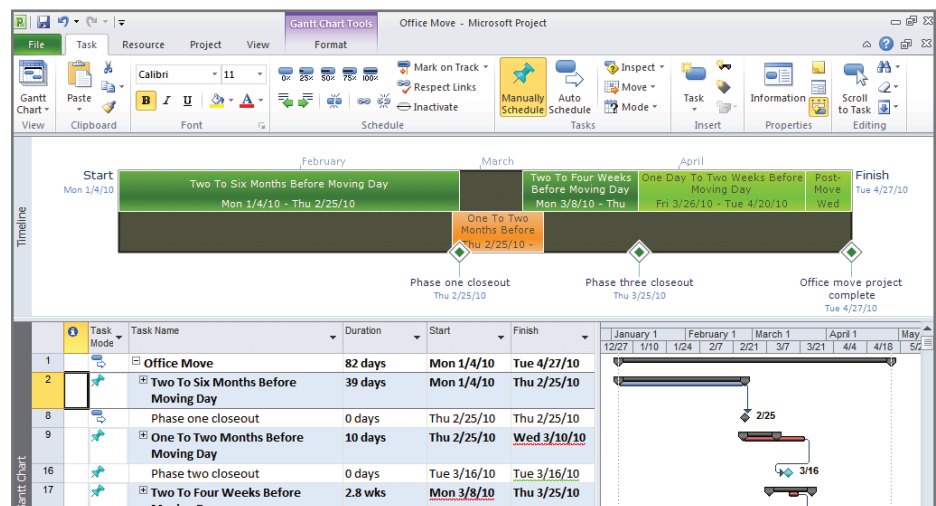
User-Controlled Scheduling

- Gain flexibility with user-controlled scheduling – manually schedule tasks with the information you have right now or choose to automatically schedule tasks with calculated dates and durations.
- Be alerted to potential scheduling concerns with squiggly lines and choose how to manage potential problems.
- Gain insight with the Task Inspector to recognize issues and take action early – solving problems by managing effectively.
- Support rolling wave planning and easily create high level forecasts using manually scheduled Top Down Summary tasks.
- Identify gaps by comparing manually scheduled summary tasks with information rolled up from subtasks.
- In Microsoft® Project Professional 2010, you can simplify planning with inactive and active tasks to perform what-if analysis.



Timeline View

- Simply create the ultimate graphical timeline to express your schedule and plan.
- It's easier to see and share – drill into details and visually recognize differences with a clear view of tasks, milestones and phases.
- Reach your audience with new impact by quickly copying the timeline into an email, presentation or any other document with formatting retained.

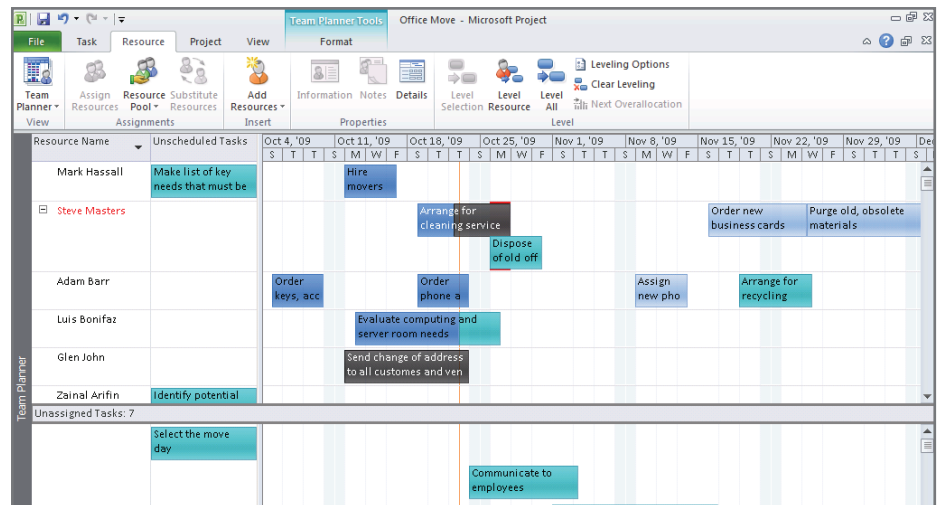


What's New in Project Professional 2010

Everything in Project Standard 2010 plus sophisticated features to manage a wide range of complex projects and programs.

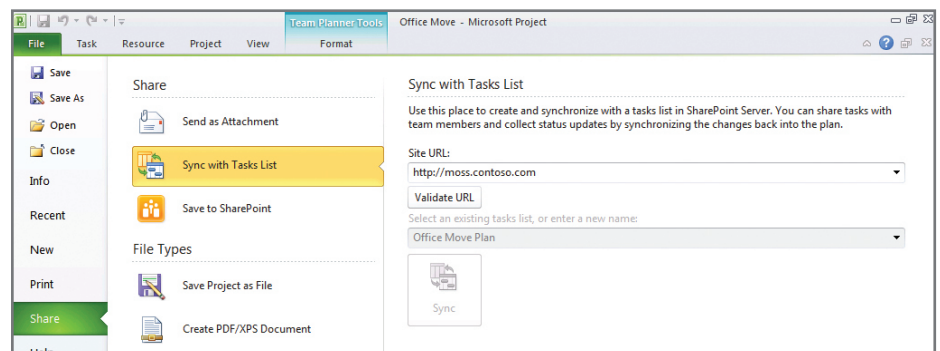
Team Planner

- Visualize the right mix of resources and assignments with a simple and intuitive resource view.
- Simply drag and drop to effectively plan tasks and optimize resources for your entire team and project.
- Quickly identify unassigned or unscheduled tasks to proactively solve problems.
- Simply hover over tasks to instantly view task-level details to plan with ease.
- Be visually alerted to potential problems choose to manually level resources as you work.
- Automatically level over allocated resources on a task-by-task basis using Task Inspector to instantly realize results.



Enhanced Collaboration

- Enhance team collaboration by sharing information more efficiently – simply save, print or publish in one easy-to-manage Backstage™ view.
- Convert Microsoft® SharePoint® Foundation 2010 task lists to realize project schedules.
- Publish your project plans to SharePoint® Foundation 2010 task lists so team members can update task status – automatically synchronize to receive updates directly into your project plans.
- Save, share and manage – simply be more connected in the ways you expect with Project Professional 2010 and SharePoint Foundation.
- Connect Project Professional 2010 with Microsoft® Project Server 2010 and gain control across all types of work, improve project selection and strategic alignment, maximize resource utilization and visualize performance through powerful dashboards.



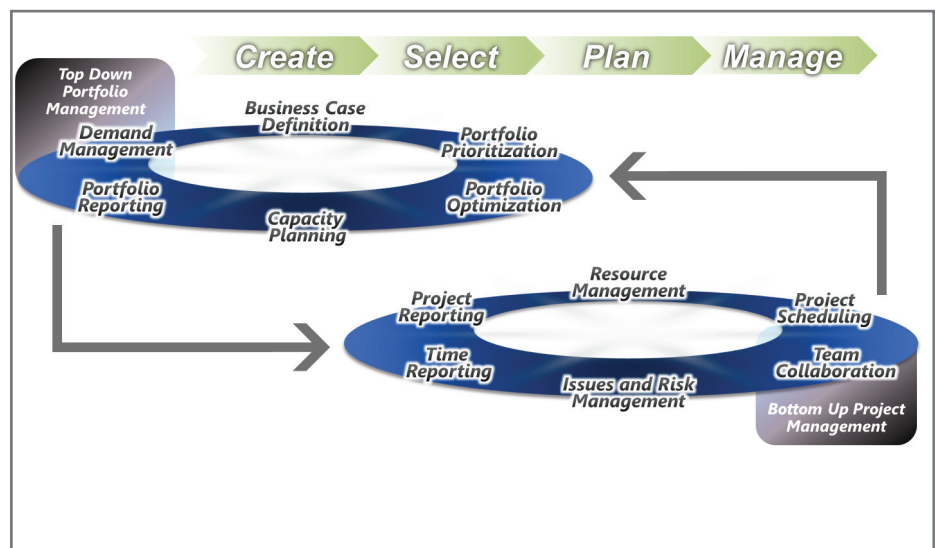
What's New in Project Server 2010

Microsoft Project Server 2010 brings together the business collaboration platform services of SharePoint Server 2010 with structured execution capabilities to provide flexible work management solutions. Project Server 2010 unifies project and portfolio management to help organizations align resources and investments with business priorities, gain control across all types of work, and visualize performance through powerful dashboards.

Unified Project & Portfolio Management (PPM)

In Project 2010, the best-of-breed portfolio management techniques of Microsoft Office Project Portfolio Server 2007 are included in Project Server 2010, providing a single server with end to end project and portfolio management (PPM) capabilities.

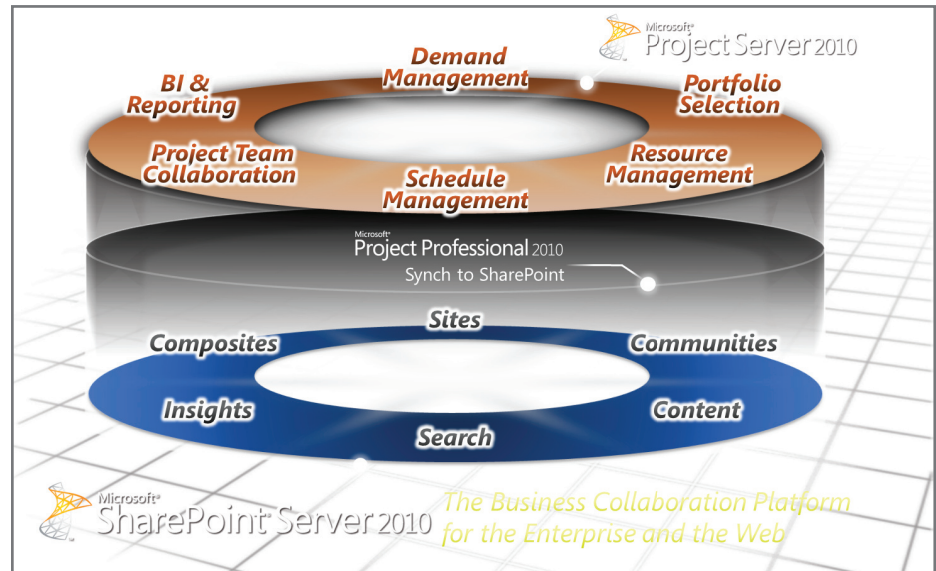
- Familiar SharePoint user interface throughout the solution.
- Common data store eliminating the need for the Project Server Gateway.
- Intuitive and simplified administration.
- Localized portfolio selection capabilities.
- Comprehensive Application Programming Interface (API) including both project and portfolio capabilities.



Built on SharePoint Server 2010

Project 2010 is built on top of SharePoint Server 2010, bringing together the powerful business collaboration platform services and structured execution capabilities to provide flexible work management solutions. Gain additional value from the Microsoft platform.

- Take advantage of the Business Intelligence platform to easily create reports and powerful dashboards.
- Control document review and approval through workflow.
- Enterprise search makes it easy to find people and effectively mine project data (resources, tasks, documents etc.).
- Connect teams and enhance communication with wikis, blogs, discussion forums and My Sites.



Project Initiation & Business Case Development

Project Server 2010 provides a new demand management module to capture all work from simple tasks to complex projects and programs.

- Develop and deploy effective governance workflows to manage project investments throughout their lifecycle and drive accountability and control.
- Define Enterprise Project Types for all requests and associate with workflow, a project plan and a custom workspace template.
- Standardize data collection through configurable business case forms. Capture project information, cost estimates, resource estimates, strategic alignment assessments and more.
- Display relevant Enterprise Project Types for each line of business using departmental fields.

Stage	State	Entry Date	Completion Date	Status Info
Phase: 1. Create				
Rejected	Not Started			
Initial Proposal Details	Not Started			
Initiate Checkpoint	Completed	8/13/2009 9:24 AM	8/18/2009 7:43 AM	updateInitialApprovalStage2: Proposal has been approve
Define	In Progress (Waiting for Input)	8/18/2009 7:43 AM		One or more business driver impact ratings have not be
Phase: 2. Select				
Select Checkpoint	Not Started			
Not Selected	Not Started			
Phase: 3. Plan				
Scheduling	Not Started			
Phase: 4. Manage				
Execution	Not Started			

Portfolio Selection

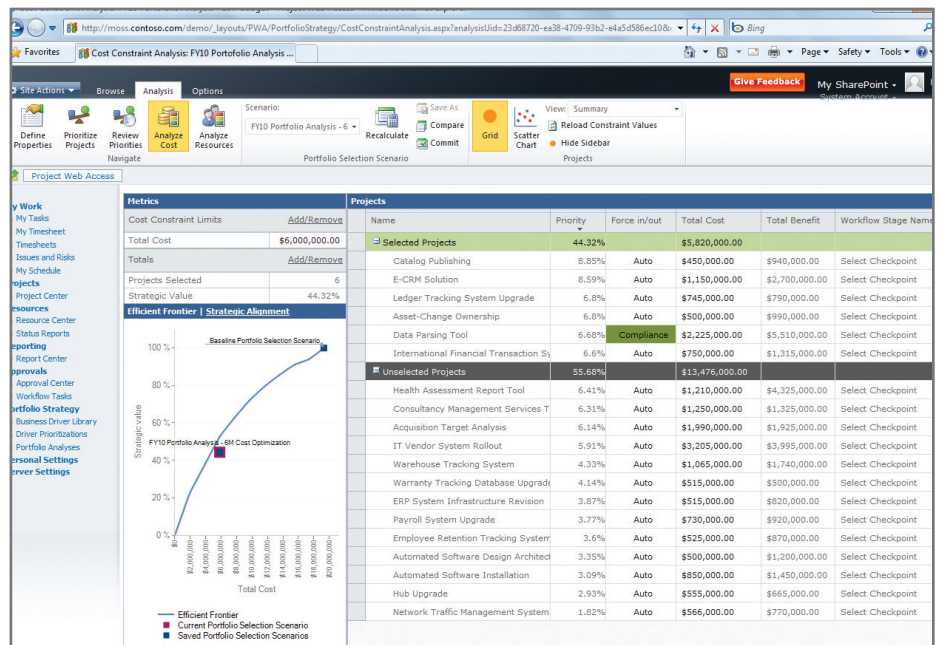
Project Server 2010 helps organizations select project portfolios that align with their business strategy by providing techniques to prioritize competing requests, run optimization scenarios under varying budgetary constraints and maximize resource utilization across the planning horizon.

Business Strategy Prioritization

- Objectively prioritize business drivers and drive consensus across the executive team.
- Intuitive and visual interface for completing the business driver prioritization assessment.

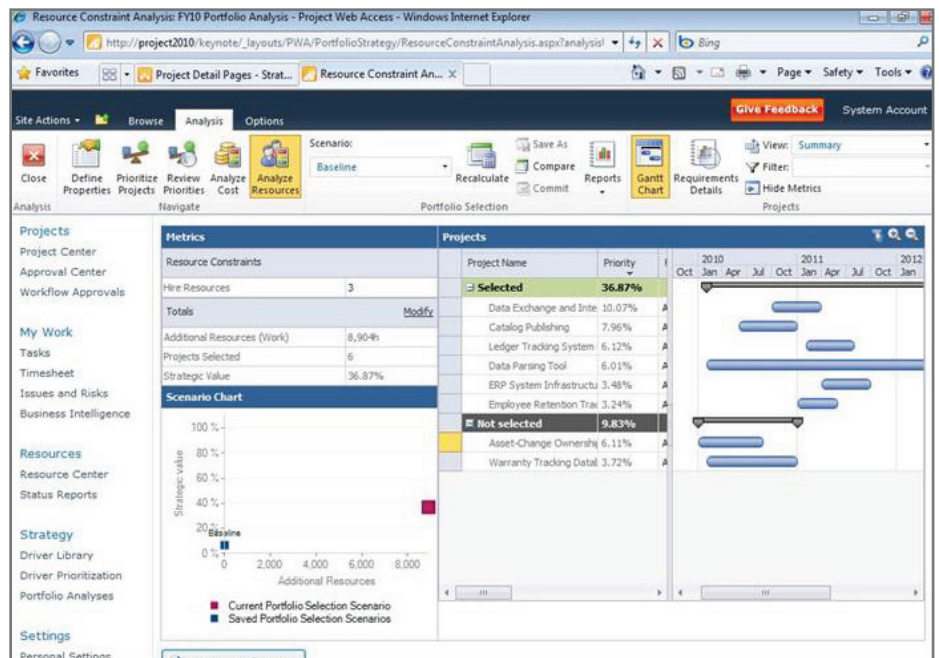
Portfolio Prioritization and Optimization

- Effectively prioritize projects from multiple dimensions – strategic value, financial value, and risk.
- Select the optimal portfolio of projects while meeting budgetary and other constraints.
- Enhanced optimization interface surfaces powerful analytical views (e.g. Efficient Frontier) to improve decision making.
- Better understand trade-offs with Force In/ Out descriptive values.
- Compare optimization scenarios side by side with snapshot scorecard.



Capacity Planning

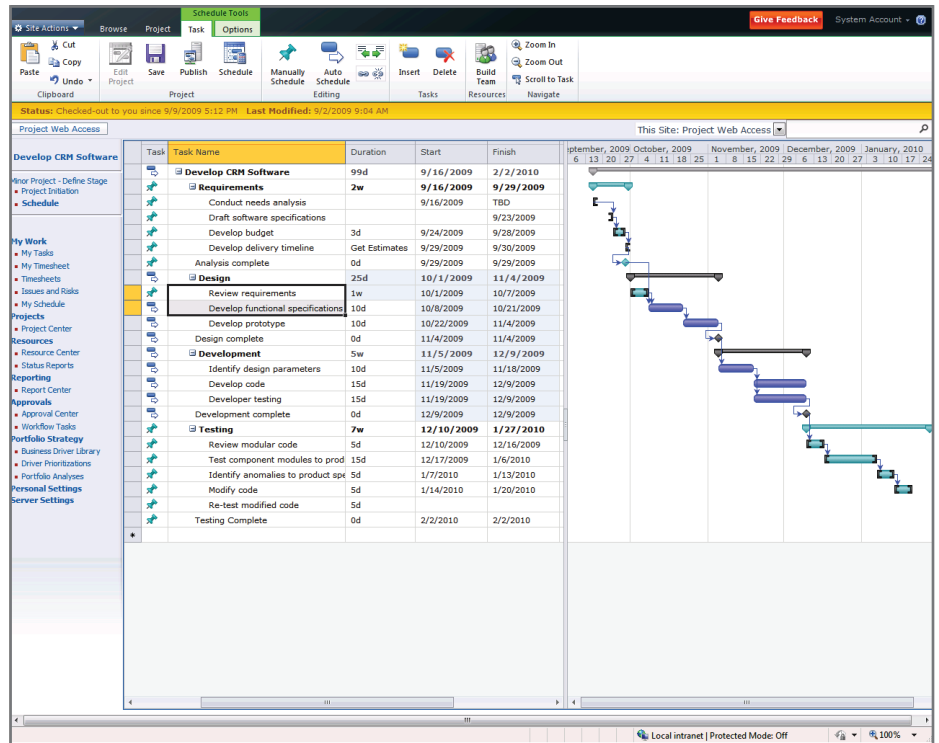
- Gain insight into generic resource demand and availability across the planning horizon.
- Reschedule projects within the horizon to maximize resource utilization while adhering to schedule dependencies.
- Model headcount decisions and compare scenarios.



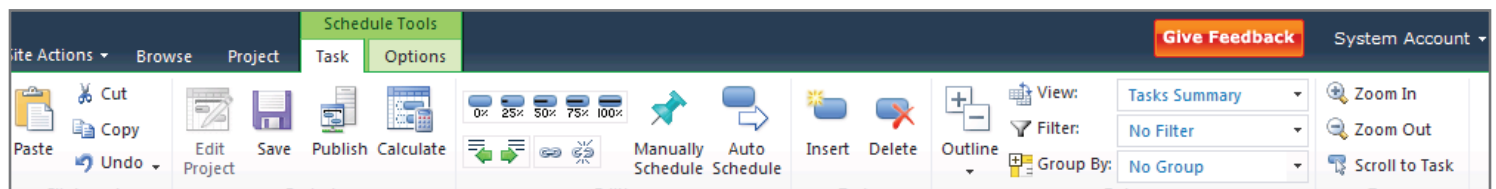
Web-Based Project Editing

Project Server 2010 brings the power of Project Professional 2010 to the browser with Web-based Project Editing.

- Easily build schedules online and conveniently make simple project edits from anywhere.
- Gain flexibility with user controlled scheduling – manually schedule tasks with the information you have right now or automatically schedule tasks to have Project calculate durations and dates.
- Create projects with more than 100 tasks, assign multiple resources, and easily define task hierarchy and dependencies.
- Gain insight with change highlighting and multi-level undo.



Fluent™ User Interface

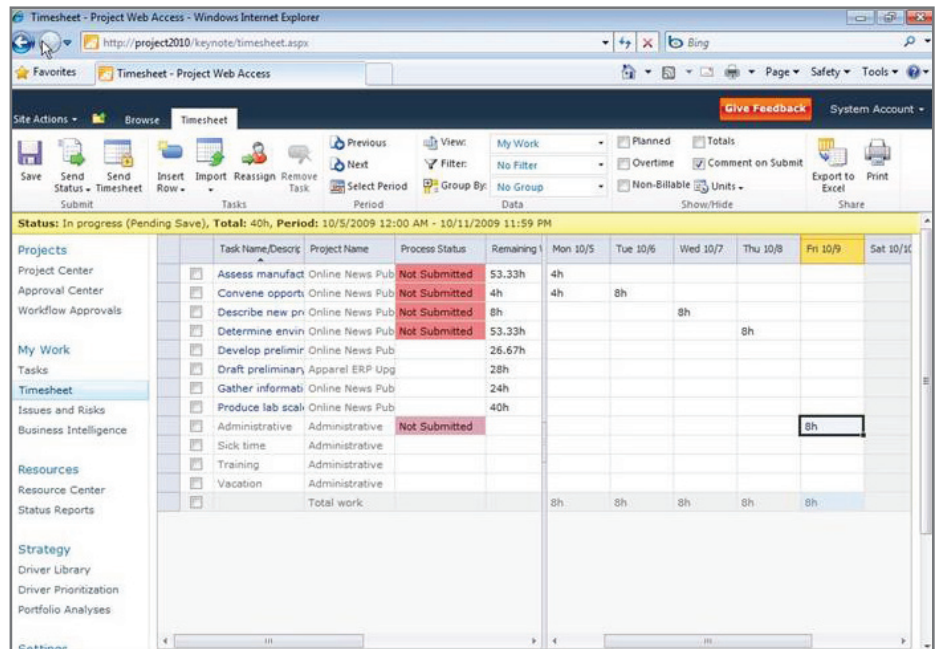


Microsoft Project 2010 delivers a consistent experience across Project Standard 2010, Project Professional 2010 and Project Server 2010 through the Fluent user interface.

- Work more efficiently with the simple and intuitive Ribbon, so the tools you need to plan and manage your project are always at your fingertips.
- Task oriented tabs and context sensitive menu groupings make finding and performing activities easier.
- Get started quickly with the consistent and familiar SharePoint 2010 based interface.

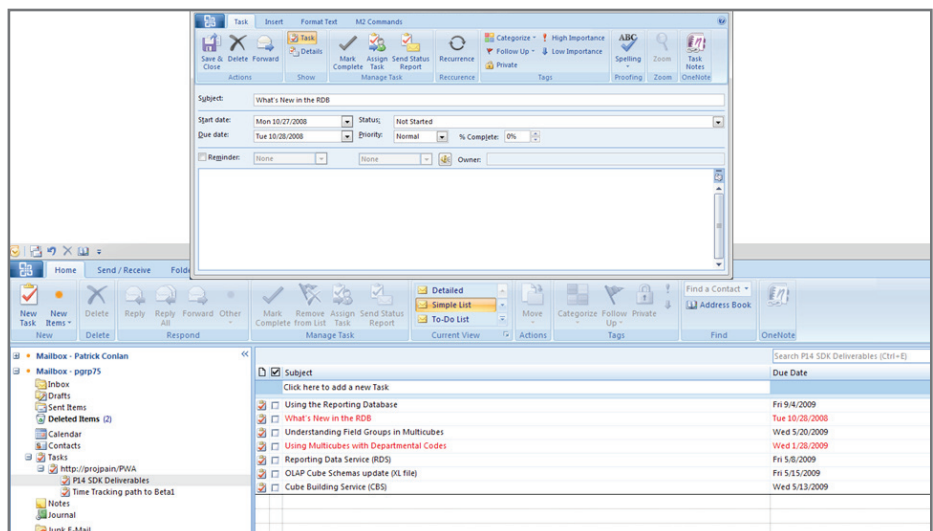
Time Reporting Enhancements

- Save time and unify task status updates and timesheet submissions by enabling Single Entry Mode.
- Flexible and consistent interface enhances the time reporting experience.
- Conveniently approve timesheet and task status updates through the consolidated Approval Center.
- Simply delegate approvals with enhanced user delegation.



Exchange Server Integration

- Choose to receive and update your project task status in Microsoft® Office Outlook.
- Project tasks are shown as Outlook tasks grouped by project name. No Outlook add-in required.
- Stay connected with notifications and updates through Outlook Web Access or your mobile phone.



Enhanced Reporting and Business Intelligence (BI)

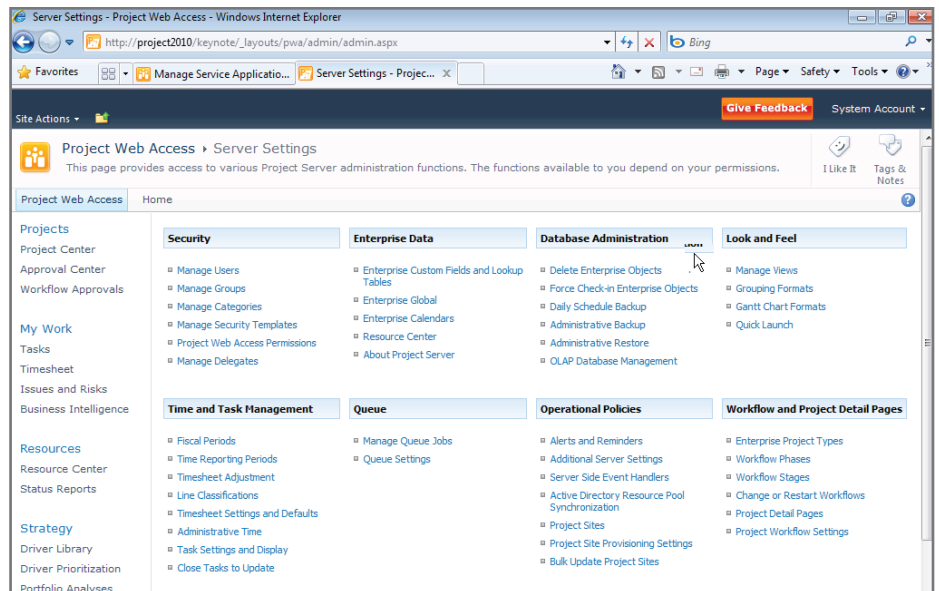
Experience the strength and depth of Microsoft Business Intelligence platform. Gain transparency and control with Excel Services, PerformancePoint Services, Visio Services, PowerPivot for Excel 2010 and SQL Reporting Services.

- Get started quickly with predefined best practice and localized report templates in the new Business Intelligence Center.
- Intuitively customize reports in a familiar Excel editor and publish through Excel Services.
- Simply create powerful audience-based dashboards to effectively monitor portfolio performance.
- Satisfy line of business reporting requirements with Departmental Cubes. Allow decision makers to focus on their data, eliminate unnecessary clutter and ensure faster cube build times.



Simplified Administration

- **Project Permissions** – Empower project managers to control who can view or edit their projects with Project Permissions.
- **User Delegation** – Enhanced delegation enables users to easily specify colleagues to act as their delegate when on vacation, without assistance from the administrator.
- **Departmental Fields** – Provide a level of autonomy while maintaining enterprise standardization and control. With Departmental Fields administrators can associate Enterprise Project Types, Resources and Custom Fields to specific departments, eliminating unnecessary clutter and allowing departments to focus on their data.
- **Centralized Administration** – One stop administration console for managing both project and portfolio management capabilities.
- **Administer Reporting Cubes** – Enhanced administration interface for displaying the status and managing available cubes. Quickly take action and intuitively add, edit, delete, copy and refresh cubes.



Extend Interoperability

Integration with related Microsoft technologies provides a familiar and connected work management platform. Empower teams to work in their preferred productivity tools and provide status updates to project stakeholders with minimal effort and administrative overhead.

- **Microsoft® Exchange Server** – Conveniently receive and update your project tasks in Outlook.
- **Microsoft® Visual Studio Team Foundation Server** – Seamlessly connect the worlds of application development and project and portfolio management.
- **Microsoft® Dynamics AX & SL** – Enhanced financial management and project accounting capabilities through Dynamics AX and SL.



Note: Project Server 2010 software and system requirements located at <http://www.microsoft.com/project/2010/>