

Project Auditor

Plan auditing
for Microsoft® Project Server



At the touch of a button, Project Auditor for Microsoft® Project Server will immediately report on either a single or a selection of projects, highlighting non-compliant plans by performing a number of predefined, best-practice audit checks including;

- Resource assignment non-compliance
 - Inactive Resources
 - Local Resources
 - Resources assigned to summaries
 - Tasks without resource assignments
- Baseline non-compliance
 - Tasks with no baseline
- Predecessor and/or successor non-compliance
 - Summary tasks with dependencies
 - Tasks without predecessor and/or successor
- Milestones non-compliance
 - Are all Key Milestones present
 - Are any key gates due to be missed
- Project Status non-compliance
 - Project Status date not set
 - Project Status date variance from the current date

Uncover cost savings and efficiencies.

Understand & increase planning maturity
Enhance project quality
Easily **identify & resolve** issues
Ensure plan compliance
Save time by eliminating manual audit checks

“invested significantly in our EPM Solution, a key issue was the integrity of the underlying data and the content of our Portfolio Analyser reports. The CPS Project Auditor provides a more efficient and effective addition to our existing data quality checking processes, giving direct control to a range of users from individual project managers through to portfolio”

Richard Jones, HMGCC

Project Auditor

At the touch of a button non-compliant plans are immediately highlighted.

Project Managers or PMO staff simply have to choose the projects and the audit checks they want to run and then select 'Audit'. The system will then provide easily understood on-screen audit reports highlighting issues as well as providing straightforward export functionality to Excel for further reporting.

With the addition of SQL Reporting Services, further reports can be enabled to graphically report on audit data and provide senior management with trend analysis, highlighting which audit checks and which projects are improving / declining over time. Project Auditor makes full use of Project Servers access control, ensuring that only authorised staff can run audit checks on the appropriate projects.

Audit checks can be configured using administration pages within the application. Each check is defined with a severity level so that when reports are run, compliance failures can be seen as red, amber or just flagged for information where the non-compliance is not significant. As new compliance checks are developed and written by CPS, they can be seamlessly 'dropped' into the application.

For further information:

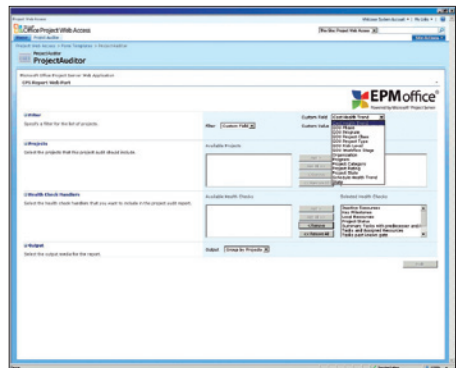
Web: **www.EPMoffice.com**
Email: **epmoffice@cps.co.uk**
Tel: **+44 (0)1628 895600**



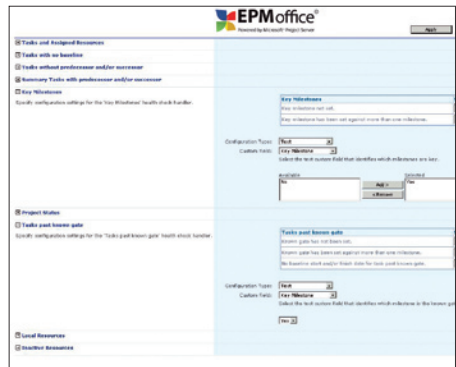
Project Auditor: Part of the EPMoffice series.



Select projects and health checks; Project Auditor provides easily understood reports, graphically highlighting issues.



Filter the projects to be selected based on any Enterprise code and the Project Server security model.



Project Auditor provides comprehensive features for administrators to define project planning and data standards across the enterprise.

“Used to take me 3 days to manually audit 70 EPM Schedules on a monthly basis. With Auditor this is only a couple of mouse click away at anytime. Eventually we want the PMs to audit their own schedules as well using this”

Simon Knowles, Project Office Manager, The Carphone Warehouse